

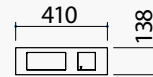
- Scale
- Induction Charger
- Bluetooth Speaker
- Rotating Socket Holder

Stainless steel scales



SATIN STAINLESS STEEL

code 1CBL



Black stainless steel scales

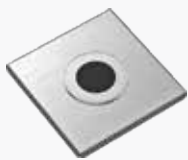


MATT BLACK STAINLESS STEEL

code 1CBLN

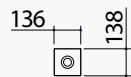
- extra thick stainless steel AISI 304
- weight range: 0-20 kg
- unit: g, kg, lb, oz
- accuracy: $\pm 1g$
- functions: tare, total, minute minder, multi-timer
- remote control for Barazza cooker hoods
- kitchen light point switch 5 A 250 V
- automatic switch-off
- 100-240 V power supply
- maximum absorption 0.2 A

Stainless steel induction charger



SATIN STAINLESS STEEL

code 1CCB



Black stainless steel induction charger

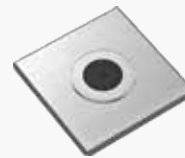


MATT BLACK STAINLESS STEEL

code 1CCBN

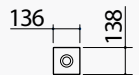
- extra thick stainless steel AISI 304
- functions: supports fast charging, high efficiency charging (79%), LED warning light, selective device detection, safety switch-off
- input: 110-240 V ac, 50/60 Hz
- output: 5 V / 9 V - 1.1 A
- max. power: 10 W

Stainless steel Bluetooth speaker

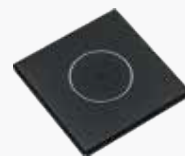


STAINLESS STEEL

code 1CCA



Black stainless steel Bluetooth speaker



MATT BLACK STAINLESS STEEL

code 1CCAN

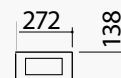
- extra thick stainless steel AISI 304
- functions: Bluetooth 5.0, 5-band digital hardware equaliser
- Bluetooth field: 10 m
- input: 110-240 V ac, 50/60 Hz
- max. power: 3 W

Stainless steel rotating socket holder



SATIN STAINLESS STEEL

code 1CPP



Black stainless steel rotating socket holder



MATT BLACK STAINLESS STEEL

code 1CPPN

- extra thick AISI 304 stainless steel cover
- 2 Schuko sockets
- 1 USB socket to power electronic devices
- cover with 180° rotating system

1-unit element

The socket holder must be positioned at the ends of the 90cm and 120cm channels, or for the 180cm channel, at the ends or in the centre.